

ALSERT DOORS





Sophisticated elegance, custom-made to match your design and décor. Invite panache and innovative functionality into your kitchen with the most versatile range of aluminium profiles/frames and door inserts available in the country.



Chosen by multi-award winning kitchen designers across Australia, Alsert Doors are the crème de la crème of aluminium kitchen cabinet doors.

Add the perfect finishing touch to your dream kitchen. Choose your door frame, the insert you adore and the hardware application you prefer to reflect your unique personal style.

Our aluminium profiles/frames come in a range of finishes to suit any design and décor including gloss white, gloss black, gloss steel, brushed stainless and clear anodised aluminium.

Choose from a multitude of inserts including laminated glass, toughened glass, safety rated glass, light sensitive glass, sparkling crystal glass, acid etched glass, mirror glass, high gloss acrylic, laminate materials and more.

Custom-made in Australia using furniture-grade aluminium frames, which are designed, engineered and extruded in Germany; not only are your doors guaranteed to be of exceptional quality, they are certain to fit perfectly and look amazing.

Backed by quality design, superior materials and world-class workmanship, Alsert Doors offers a 10 year warranty on assembly.

Your kitchen should be an affordable masterpiece. So when you want sophisticated, elegant and modern doors at an intelligent price, you won't go past Alsert Doors.

Be inspired, browse our catalogue and make your dream kitchen a reality.

Cabinet Door Mechanisms

Select from our range of hinged doors, lift up bi-fold doors, up & over doors, microwave cabinet doors and spring flap doors to suit your dream application.

Hinged Doors



The most common door opening method. Our online ordering system is designed to automatically select the correct number of hinges determined by the height, width and weight of the door.

Spring Flap HK Door



A lift system for mid-wall units and above refrigerators, etc. For flat profiles/frames an assembly kit is supplied.

Lift Up Bi-Fold HF Door



This system is a solution for high and mid-wall units for kitchens and living areas. Lift up bi-fold doors are not available for flat profiles/frames.

Microwave HL Door



Specifically designed for microwave units. For flat profiles/frames an assembly kit is supplied.

Sliding Bi-fold Doors



A folding door that moves easily and quietly while providing unobstructed access. Overlay sliding bi-Fold doors are suitable for cabinets only. Available in box profiles/frames in one pair or two pairs of doors.

Up & Over HS Door



A fitting suited for large cabinets. For flat profiles/frames an assembly kit is supplied.

Cabinet Door Mechanisms

Sliding Doors



Alsert Doors can supply bottom running sliding doors [for cabinets only] using box profiles/frames.

Track is available in surface mount or recessed options and also in clear anodised and white powder coated aluminium finishes. Flush handles are recommended to allow the doors to slide past each other. 50/43 mm and 50/50 mm box profiles are the only profiles suitable for this type of handle.



Undrilled Panels

All Box and all flat Profiles/frames [except the 25 mm flat] can be ordered as undrilled panels.

Drawer Fronts



All box profiles/frames are suitable for use as drawer fronts.

Also, the 35 mm flat, the 40 mm flat and the 40 mm curved profiles/frames are suitable for drawer fronts but require a white MDF infill for fixing of the drawer front. Alsert Doors automatically include this infill.

All other flat or curved profiles/frames are unsuitable for drawer fronts. All handle applications except "no handle" can be utilised.

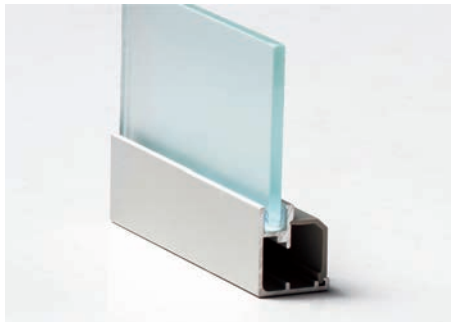


Aluminium Door Profiles/Frames

With the largest range in Australia, Alsert Doors are available in a huge variety of finishes and styles to suit your project design and decor.

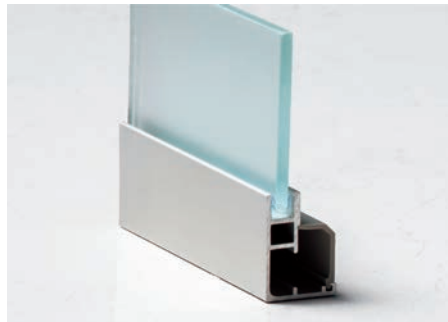
Clear Anodised Aluminium

Flat Profiles/Frames



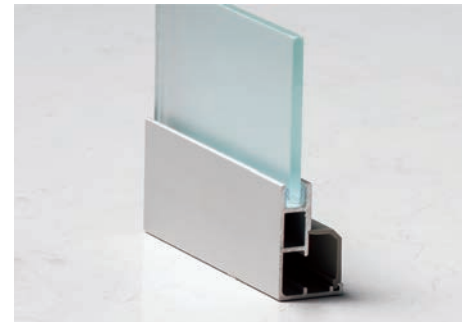
25 mm Flat Clear Anodised Aluminium

Suitable for hinged doors, spring flap doors, microwave doors and up & over doors.



30 mm Flat Clear Anodised Aluminium

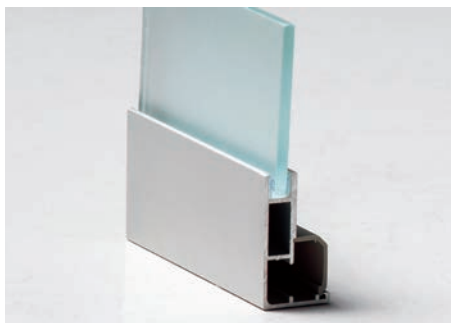
Suitable for hinged doors, spring flap doors, microwave doors and up & over doors.



35 mm Flat Clear Anodised Aluminium

Suitable for hinged doors, spring flap doors, microwave doors, up & over doors and drawer fronts.

Flat Profiles/Frames



40 mm Flat Clear Anodised Aluminium

Suitable for hinged doors, spring flap doors, microwave doors, up & over doors and drawer fronts.

Curved Profiles/Frames



30 mm Curved Clear Anodised Aluminium

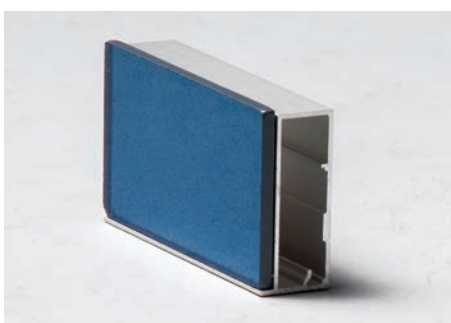
Suitable for hinged doors, spring flap doors, microwave doors and up & over doors.



40 mm Curved Clear Anodised Aluminium

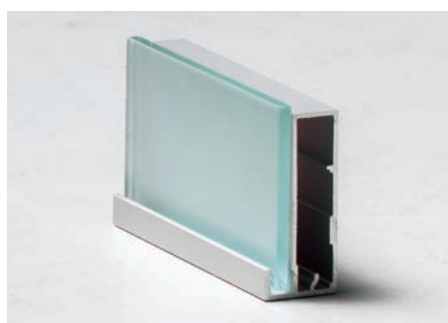
Suitable for hinged doors, spring flap doors, microwave doors, up & over doors and drawer fronts.

Box Profiles/Frames



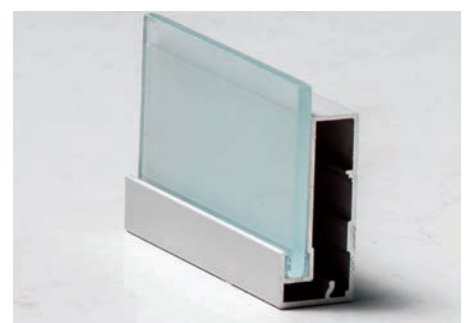
50/00 mm Box Clear Anodised Aluminium

Suitable for all hardware applications.



50/08 mm Box Clear Anodised Aluminium

Suitable for all hardware applications.

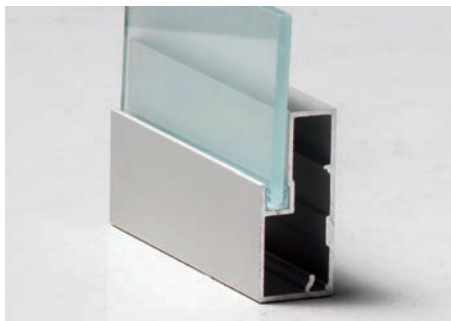


50/19 mm Box Clear Anodised Aluminium

Suitable for all hardware applications.

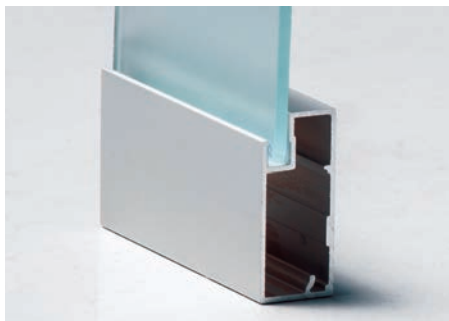
Clear Anodised Aluminium

Box Profiles/Frames



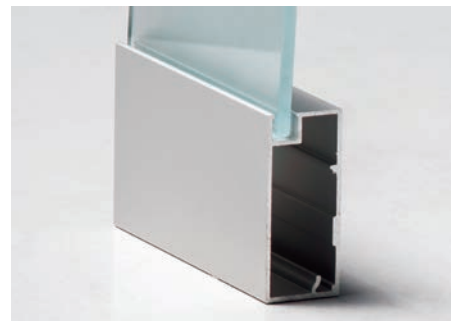
50/31 mm Box Clear Anodised Aluminium

Suitable for all hardware applications.



50/43 mm Box Clear Anodised Aluminium

Suitable for all hardware applications.

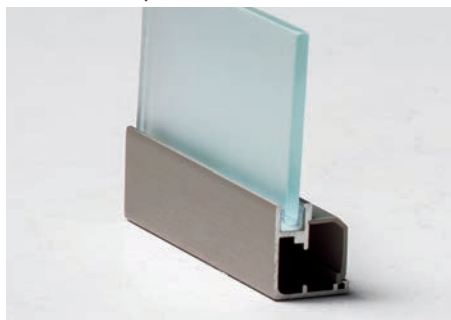


50/50 mm Box Clear Anodised Aluminium

Suitable for all hardware applications.

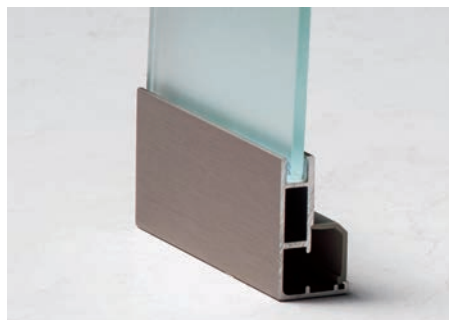
Brushed Stainless Aluminium

Flat Profiles/Frames



25 mm Flat Brushed Stainless Aluminium

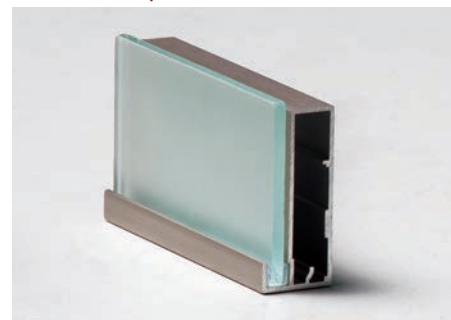
Suitable for hinged doors, spring flap doors, microwave doors and up & over doors.



40 mm Flat Brushed Stainless Aluminium

Suitable for hinged doors, spring flap doors, microwave doors and up & over doors.

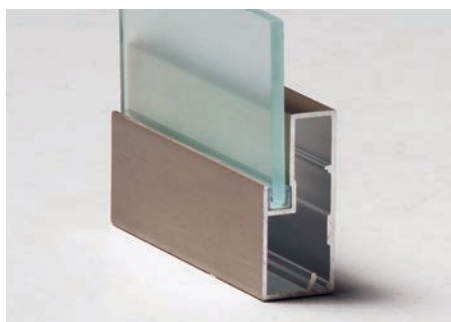
Box Profiles/Frames



50/08 mm Box Brushed Stainless Aluminium

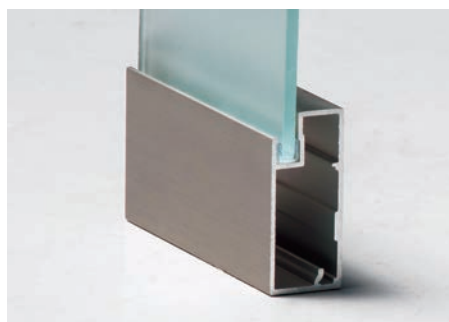
Suitable for all hardware applications.

Box Profiles/Frames



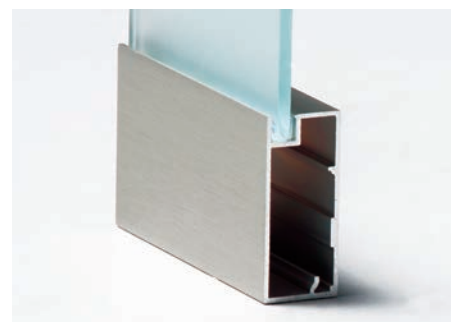
50/31 mm Box Brushed Stainless Aluminium

Suitable for all hardware applications.



50/43 mm Box Brushed Stainless Aluminium

Suitable for all hardware applications.



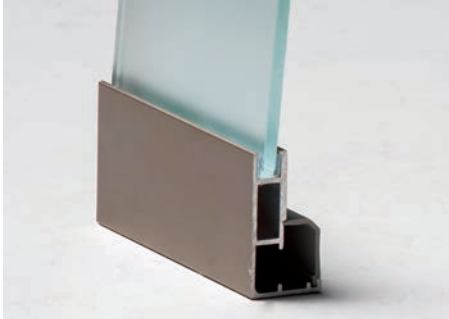
50/50 mm Box Brushed Stainless Aluminium

Suitable for all hardware applications.

Aluminium Door Profiles/Frames

Gloss Steel Aluminium

Flat Profiles/Frames



40 mm Flat Gloss Steel Aluminium

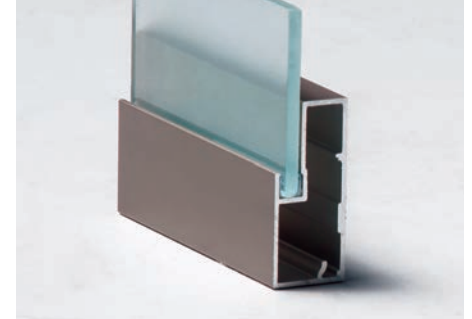
Suitable for hinged doors, spring flap doors, microwave doors up & over doors and drawer fronts.

Box Profiles/Frames



50/08 mm Box Gloss Steel Aluminium

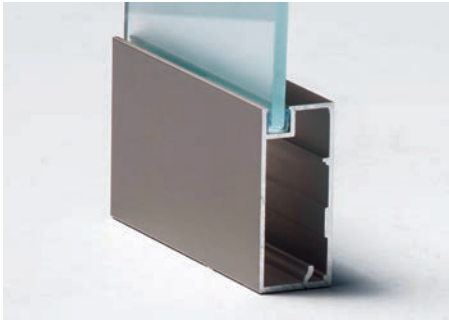
Suitable for all hardware applications.



50/31 mm Box Gloss Steel Aluminium

Suitable for all hardware applications.

Box Profiles/Frames



50/50 mm Box Gloss Steel Aluminium

Suitable for all hardware applications.

Gloss White Aluminium

Box Profiles/Frames



50/08 mm Box Gloss White Aluminium

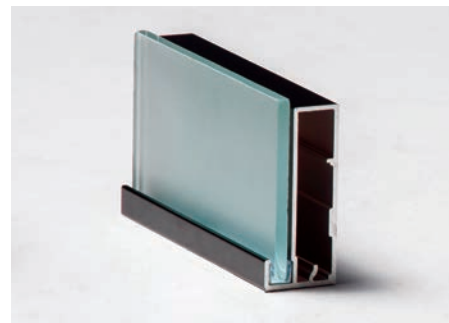
Suitable for all hardware applications.



Same profile/frame without glass insert.

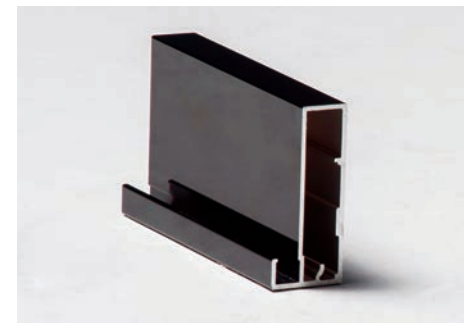
Gloss Black Aluminium

Box Profiles/Frames



50/08 mm Box Gloss Black Aluminium

Suitable for all hardware applications.



Same profile/frame without glass insert.



Bring Alsert Doors to life and scan this QR code to watch our videos.



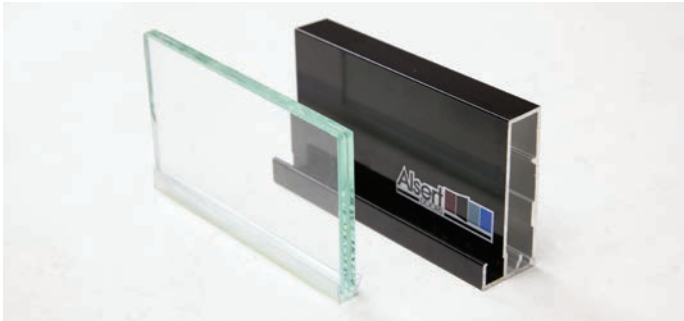
To Scan the QR code simply download a free QR reader app onto your smart phone



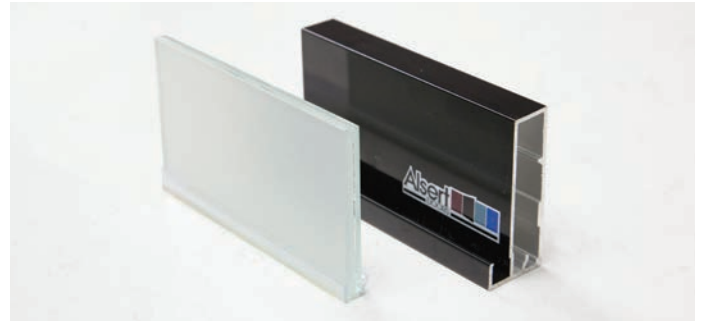
Door Inserts

Alsert Doors have a huge range of inserts for our cabinet doors in a variety of colours and finishes to enhance your project design and decor.

Laminated Glass Inserts

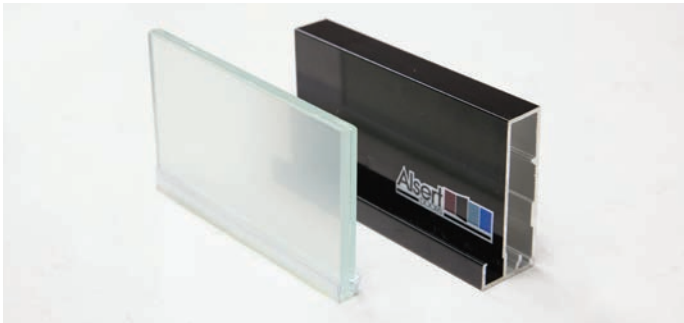


Clear Laminated Glass Door Insert

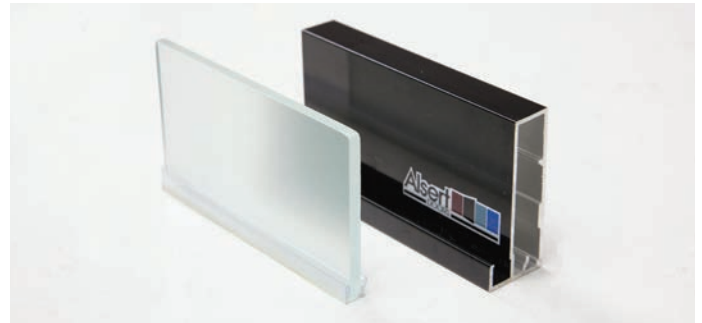


Milky White Laminated Glass Door Insert

Toughened Glass Inserts



Soft White Laminated Glass Door Insert

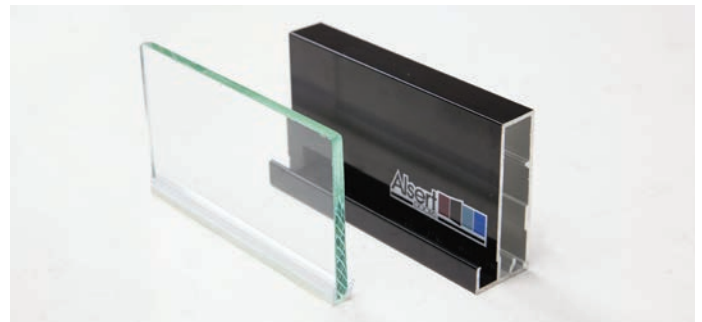


Acid Etched Toughened Glass Door Insert

Toughened Glass Inserts



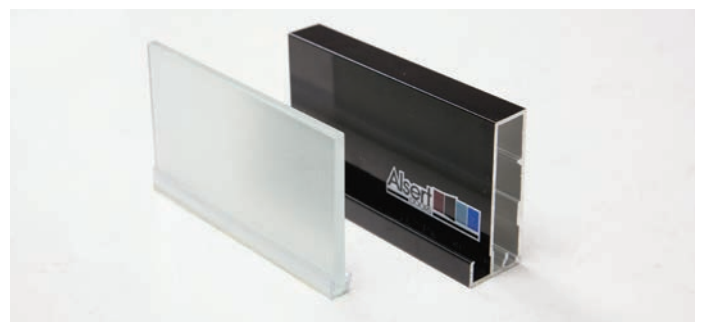
Black 60% Trans Toughened Glass Door Insert



Clear Toughened Glass Door Insert

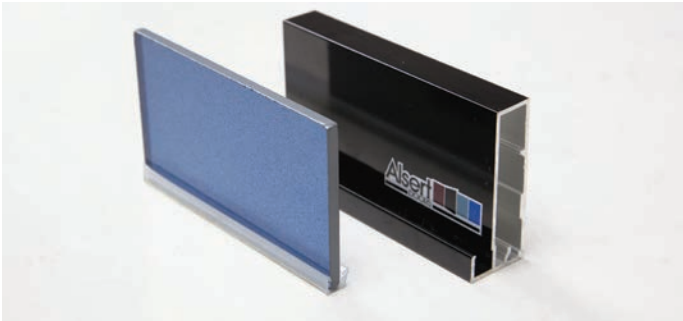


Grey Acid Etched Toughened Glass Door Insert



Sandblasted on Clear Toughened Glass Door Insert

Toughened Glass Inserts

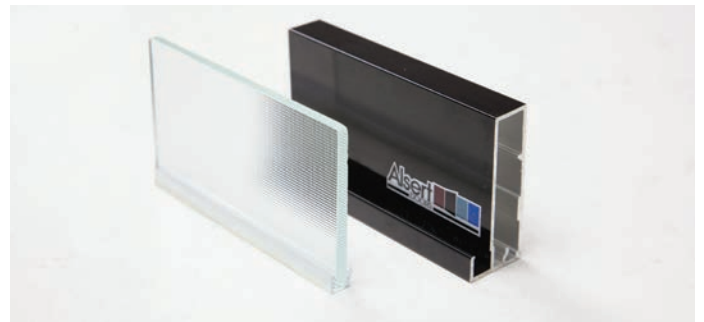


Painted Starphire Toughened Glass Door Insert

** Choose your preferred colour from the colour charts of recognised paint manufacturers.*



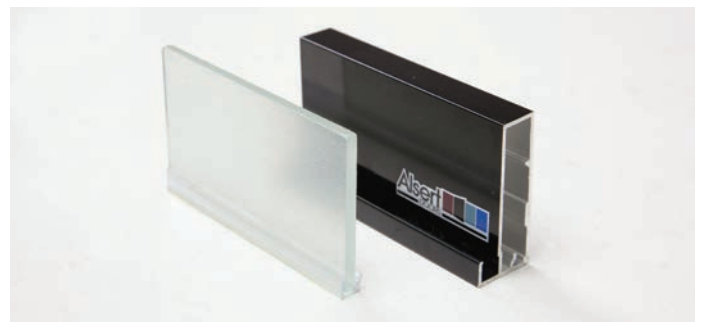
Sandblasted on Starphire Toughened Glass Door Insert



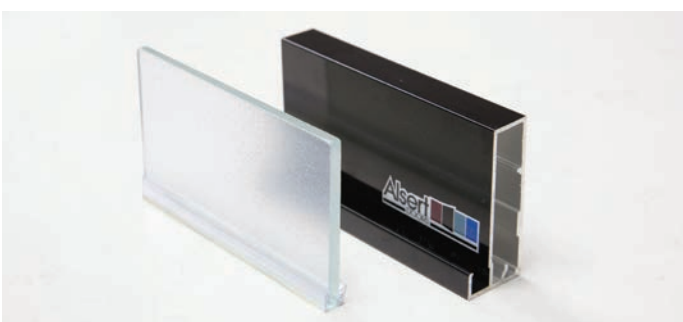
Satinlite Toughened Glass Door Insert



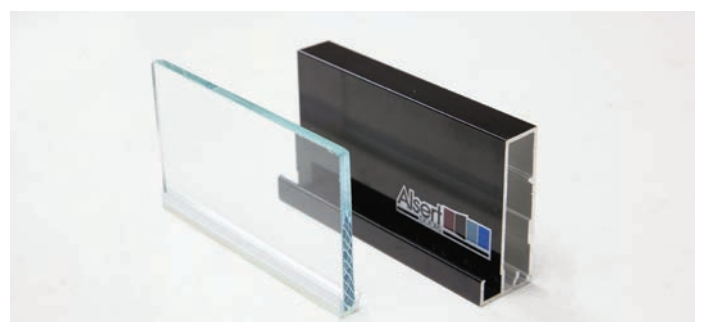
Smoked Toughened Glass Door Insert



Sparkling Crystal on Clear Toughened Glass Door Insert



Sparkling Crystal on Starphire Toughened Glass Door Insert



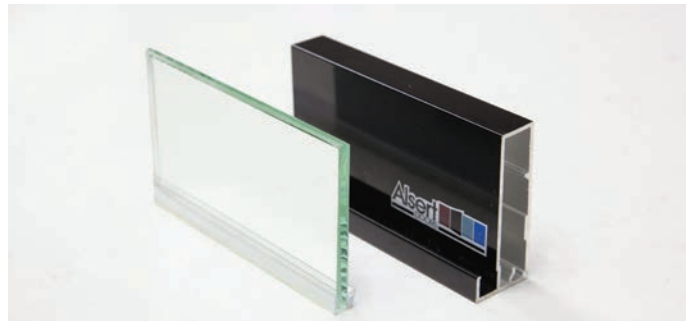
Starphire Toughened Glass Door Insert

Door Inserts

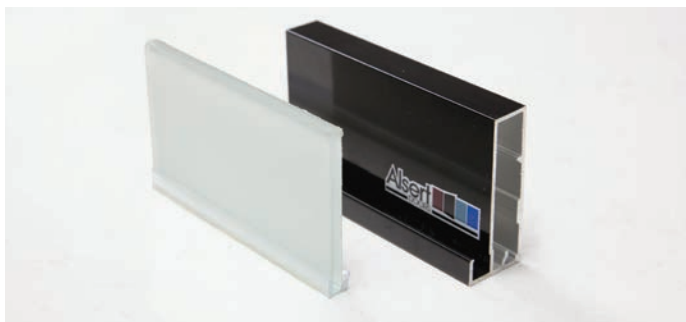
Safety Rated Glass Inserts



Mirror Grey Safety Glass Door Insert



Mirror Silver Safety Glass Door Insert



Opti-Panel Safety Glass Door Insert



Superblack Safety Glass Door Insert

Acrylic Inserts

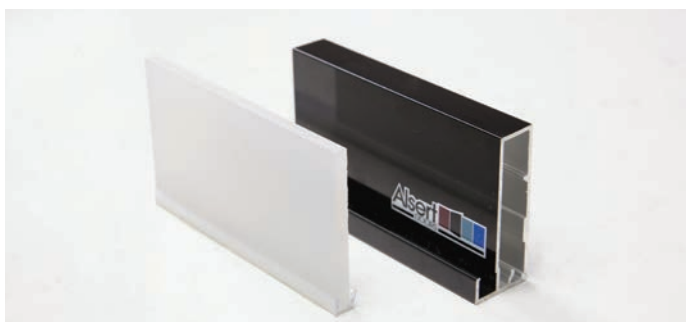


Superwhite Safety Glass Door Insert

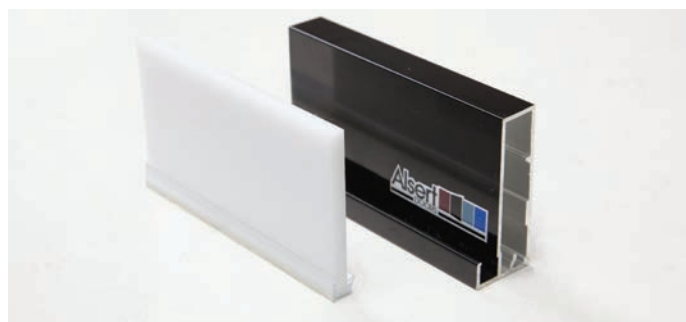


Black Gloss Acrylic Door Insert

Acrylic Inserts



Polar White Acrylic Door Insert



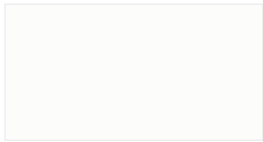
White Opal Glass Acrylic Door Insert



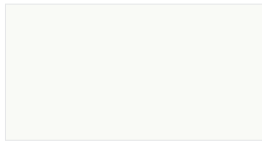
Door Inserts

Metaline Aluminium Inserts

Metaline is an advanced aluminum based panel which is highly durable and flame retardant. Visit our website to see the current full range.



Diamond Ice



Icicle Metallic



Argente Perle



Regal Crème



Champagne Perle



Palladium Perle



Silver Stream Perle



Smoked Silver Perle



Nimbus Metallic



Velocity Perle



Autumn Perle



Sophisticat



Style Queen



Iridium Metallic



Black Ice



Tangelo Metallic



Lipstick Red



Chartreuse Metallic



Lagoon Metallic



Rubicon Perle



Brushed Aluminium

Alucobond - Dibond Aluminium Inserts

Dibond is a lightweight aluminum composite panel. Visit our website to see the current full range.



Traffic Red



Traffic Yellow



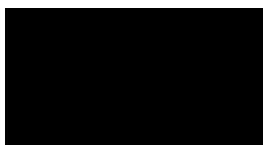
Ultramarine Blue



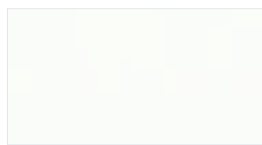
Light Ivory



British Green



Jet Black



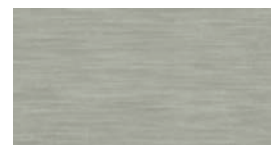
Platinum White



Metallic Aluminium



Butlerfinish Standard



Butlerfinish Steel



Butlerfinish Gold



Butlerfinish Copper



Mirror



Mirror Gold



Mirror Anthracite

Zenolite Acrylic Inserts

Zenolite is an optical grade polymer that is co-extruded to encapsulate both a colour and clear layer. Zenolite is not painted. Visit our website to see the current full range.



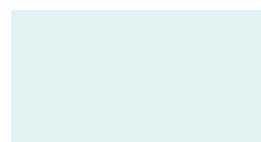
Arctic



Blue Atoll



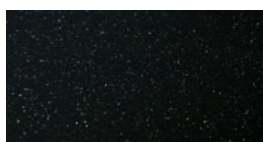
Carbon



Glacier



Ivory



Metallic Black



Mocha



Olive



Rouge



Sahara



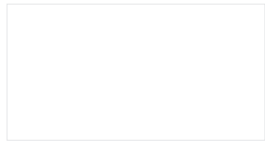
Titan

Door Inserts

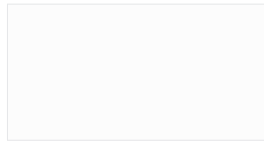
StyleLite Acrylic Inserts

StyleLite is a high gloss acrylic finished panel. Visit our website to see the current full range.

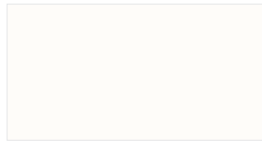
* Denotes Metallic



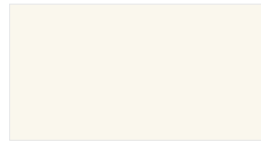
Frost



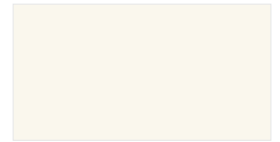
Arctic



Lace



Alabaster



Sierra



Ash



Sand



Silver*



Slate



Fossil



Champagne*



Mocha



Espresso



Graphite*



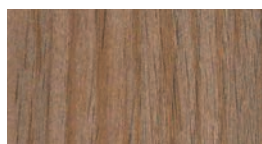
Cherry



Ruby



Carbon



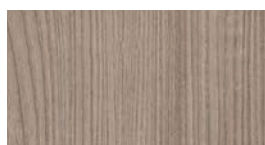
Glassa Cherry



Riga Birch



Tulipwood



Sienn Teak



Tierra Elm



Lavato Oak

Handle Alternatives For Alsert Doors

Because of the nature of the materials used in the manufacture of Alsert Doors, handle selection and positioning can require extra thought.

"No Handle" Look



The "no handle" look achieved here is created by increasing the height of the door by 10 mm or more. The overhang below the carcass acts as a handle.

Drilling of the door profile, or insert, is not required. Of course, this is not practical for floor unit doors, pantry doors or drawer fronts and can only be used if no other door or panel abuts the handle edge.

All profiles/frames are suitable for this handle method.

"Touch To Open"



"Touch to open — push to close". Alsert Doors, or your hardware distributor, can supply "touch to open" fittings specially designed for the opening and closing of cupboard doors, pantry doors and drawer fronts. This fitting is inserted into the edge of the carcass.

Drilling of the door, or insert, is not required. The "touch to open" fitting is not suitable for doors for microwave doors, up & over doors, sliding doors or bi-fold doors but will operate with the spring flap door. All profiles/frames are suitable for this handle method.

Integrated Clear Anodised Handle



Due to high demand and no genuine alternative, we have engineered and released a clear anodised integrated handle. This integrated handle is designed and manufactured with cutting-edge technology and craftsmanship.

It's safer, smoother and more stylish than anything else on the market. Suitable for most hardware applications, it can be placed anywhere on the door, horizontally or vertically, but not within 60 mm of any corner.

The handle is 197 mm long and is not suitable for doors where the handle stile length is under 317 mm. These are only available for box profiles. You may consider using the clear anodised finish as a contrast to other Alsert Doors profile finishes.

Note:- Integrated handles are not suitable for flat or curved profiles/frames.

Handles

Standard Handles - Fixing

Handles can be fixed to Alsert Aluminium Doors in three different ways: through the profile/frame only, through the insert and profile/frame or through the insert only.

Through The Profile/Frame Only



The 35 mm and 40 mm flat profiles and, also, the 50/31 mm, 50/43 mm and 50/50 mm box profiles can be drilled through the profile for fixing of suitable handles.

The handle holes are to be drilled by the installer.

Through The Insert & Profile/Frame



50/00 mm, 50/08 mm and 50/19 mm box frames can be drilled through both the frame and insert.

Alsert can pre-drill holes in all toughened glass inserts.

All other glass, including mirrors, cannot be drilled. Inserts other than glass - acrylic, etc. - are to be drilled by Installer.

All profile/frame holes to be drilled by installer.

Through The Insert Only



Alsert can pre-drill holes in all toughened glass inserts.

All other glass inserts, including mirrors, cannot be drilled.

Inserts other than glass to be drilled by installer.

All profiles are suitable for this method of handle fixing.



Scan this QR code to view our handles.



To Scan the QR code simply download a free QR reader app onto your smart phone

Notes:

